

1T20682 | CIRCULAR brush - Twisted steel wire - Coarse scouring of the metal **TECHNIC** (Blister Box)

Aggressive brush for intensive use, for all deburring jobs and for the removal of rust.



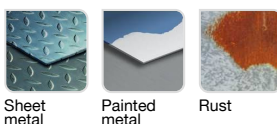
- Superior long life
- Quick-change shank
- Steel wire
- Twisted wire
- Circular shape



Machine



Application



Features



Properties and benefits

- + Quick-Change hex attachment: a hexagonal recessed attachment for the quick locking and unlocking of the bit. Compliant with the DIN 3126 E6.3 standard ➡ Enables the quick changing of your bits by doing away with the manual tightening/loosening of the chuck. For drills and screwdrivers.
- + Steel wire: bristles that are highly resistant to wear and traction ➡ Enables stripping, rust removal, and the deburring of all your surfaces.
- + Twisted wire: material is twisted for more aggressive cleaning ➡ Enables thorough stripping thanks to the strength of the twisted bristles, without any need to apply pressure.
- + Circular shape: circular geometry for use on edges. ➡ Enables simple stripping on narrow surfaces.

Code	EAN	Ø	Edge thickness	grain	Specificity	QTY	PCB
XT202520131	3221912072344	75	0,5		Spring steel wire	1	3