

1T20562 | PENCIL brush - Brass-plated steel wire - Stripping of wood, brass, copper **TECHNIC (Blister)**

For stripping work, the removal of paint, rust, limescale, incrustations and burrs.



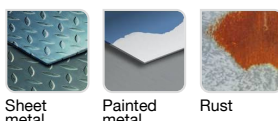
- **Superior long life**
- **Quick-change shank**
- **Brass-coated steel wire**
- **Corrugated wire**
- **Pencil brush**



Machine



Application



Features



Properties and benefits

- + Quick-Change hex attachment: a hexagonal recessed attachment for the quick locking and unlocking of the bit. Compliant with the DIN 3126 E6.3 standard ➡ Enables the quick changing of your bits by doing away with the manual tightening/loosening of the chuck. For drills and screwdrivers.
- + Brass-coated steel wire: very strong brass-coated bristle with good, aggressive brushing ➡ Enables stripping and rust removal from all your surfaces. The coating gives the product a longer lifespan.
- + Corrugated wire: light stripping of your surfaces, thanks to the crimped material. ➡ Enables the gentle brushing of your surfaces with no need to apply pressure.
- + Pencil shape: tube-type geometry for use in tight spaces. ➡ Enables simple stripping in difficult to access spaces and corners.

Code	EAN	Ø	Edge thickness	grain	Specificity	QTY	PCB
XT202520120	3221912072269	24	0,3		Brass-plated steel	1	3
XT20252006081	3221912713889						3